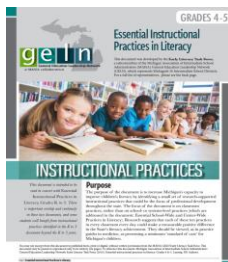
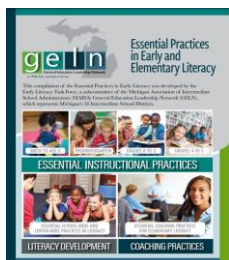


# MACOMB COUNTY'S STRUCTURED APPROACH TO EFFECTIVE LITERACY INSTRUCTION

Literacy Learning Modules Grades 3-5 Cohorts  
2025-2026



## Structured Literacy

- Michigan Academic Standards
- The Science behind Reading and Writing Instruction
- Essential Practices in Early and Elementary Literacy
- Explicit, Direct and Systematic Instructional Practices

The Michigan Academic Standards in Language Arts and the *Essential Practices in Elementary Literacy* are embedded within each of the modules. Macomb's structured approach to literacy is a framework designed to help ALL students grow as readers and writers.

## 4 Full Days From 8:30am-3:00 pm

Cohort Summer K : 6/23/25 – 6/26/25

Cohort Summer L : 8/4/25 – 8/8/25

Cohort Fall M: 10/7/25 - 10/28/25

Cohort Winter N: 1/7/26 – 1/27/26

Cohort Summer O: 6/15/26 – 6/18/26

Cohort Summer P: 8/3/26 – 8/6/26

**Cost: \$175 (Macomb County Teachers)  
\$275 (Out of County Teachers)  
SCECHs pending MDE approval**

Macomb County Teachers participating in a Grades 3-5 Summer Cohorts are eligible for a stipend of \$100 per session upon completion of their passport.

**For questions about registration, please contact  
Tammy Taylor at [ttaylor@misd.net](mailto:ttaylor@misd.net) or 586-228-3476**



Hosted by:  
MISD Literacy Team

Facilitated by Exemplar Teacher Leaders  
from Macomb County

## 4 Full Days of Professional Learning

### DAY 1: Overview

#### ***What's all the BUZZ about the Science Behind Reading and Writing?***

- Pillars of Structured Literacy
- Michigan Academic Standards
- Essential Instructional Practices in Literacy
- Explicit, Direct, Systematic Instruction
- Assessment

### DAY 2

#### ***HELP! What and how do I teach writing?***

- Sentence Construction/Elaboration
- Paragraph Structure
- Writing process and strategies
- Types of writing (genres)
- Conferring with students
- Passage-Based Writing

### DAY 3

#### ***How do I impact whole and small group instruction?***

- Assessments to Target Instruction
- Whole to Small Group Instruction
  - Small Group Routines
  - Meaningful Literacy Stations
- Advanced Word Study: **Word and Structural Analysis** (syllable types, morphemes – roots, prefixes, suffixes)
- Reading Fluency

### DAY 4

#### ***Where can I dig deeper in reading?***

- Shared/Interactive Read-Aloud
- Text Sets
- Explicit Comprehension Instruction
- Explicit Vocabulary Instruction

### Target Audience:

Building Administrators, Grades 3-5 Teachers, Instructional Coaches, Interventionists, Title I Teachers, Special Education Teachers, and ELD Teachers